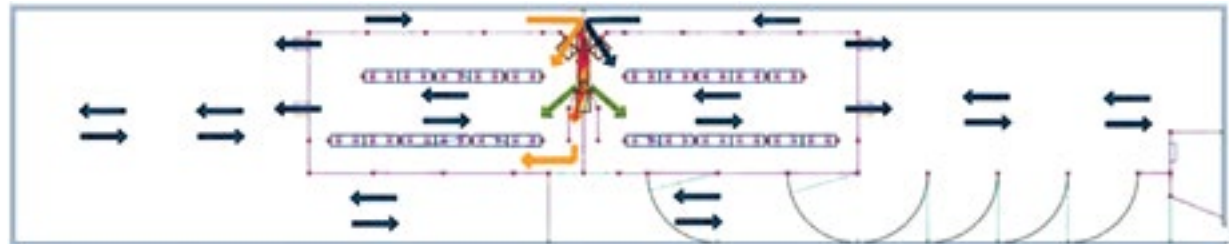


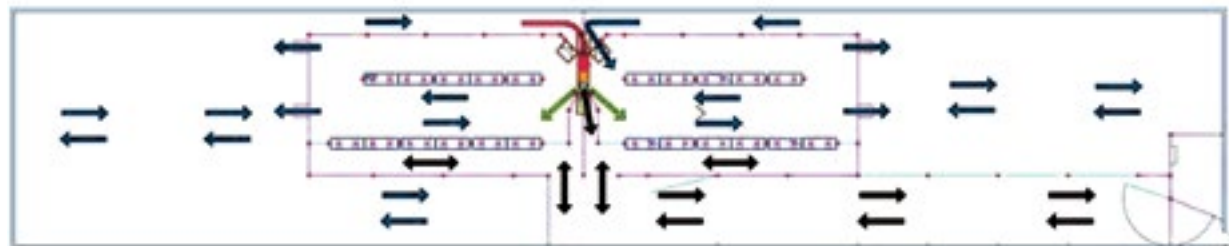
**PATENTED PIG FLOW**

- ▶ SortAll Revolution 2 placed between two pens to increase versatility.
- ▶ Gates move automatically to train and sort pigs naturally.

**A.**  
Normal Growth

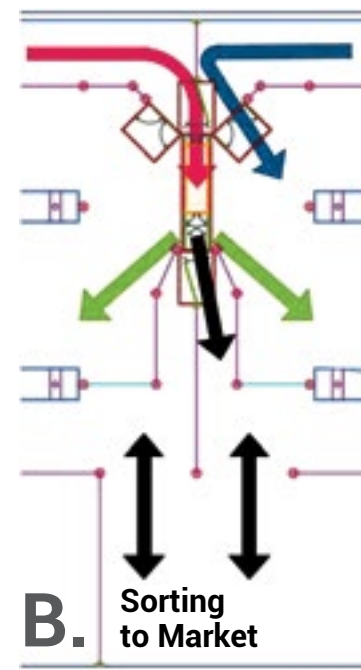
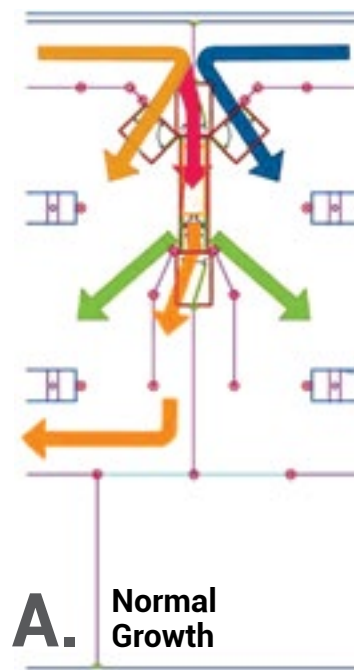


**B.**  
Sorting to Market



**Color Key**

- General population
- Pigs entering the SortAll Revolution 2
- Pigs sorted from one pen to the other
- Pigs free choosing the scale
- Pigs being sorted into the holding pen



*AUTOMATED HOG SORTING SYSTEM*



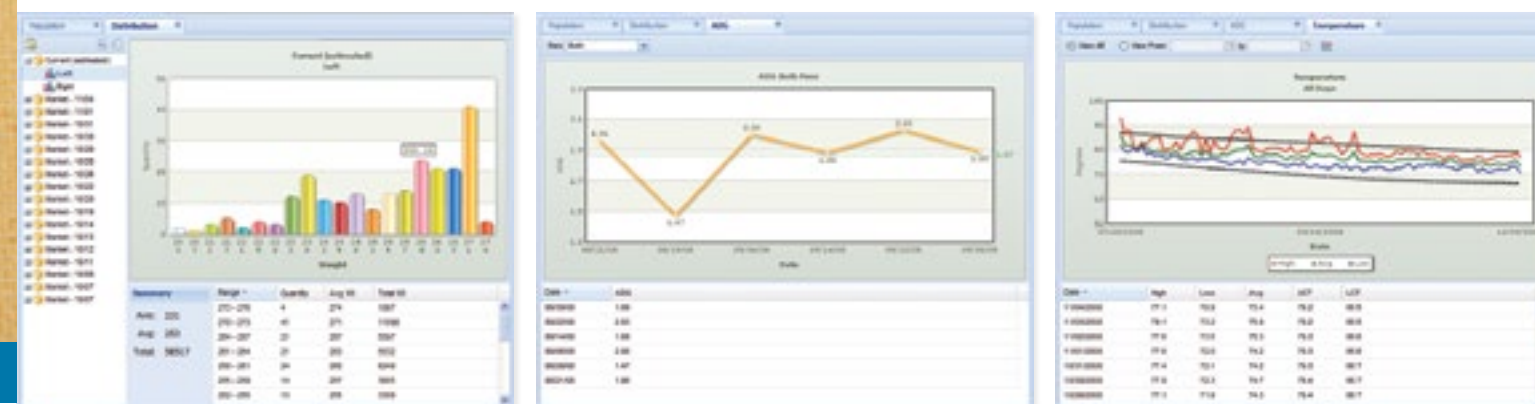
- ▶ **Effective:** Encourages consistent pig growth
- ▶ **Scalable:** Handles up to 1,400 head
- ▶ **Durable:** All stainless steel construction
- ▶ **Efficient:** Access organized data

[www.SortAll.com](http://www.SortAll.com)

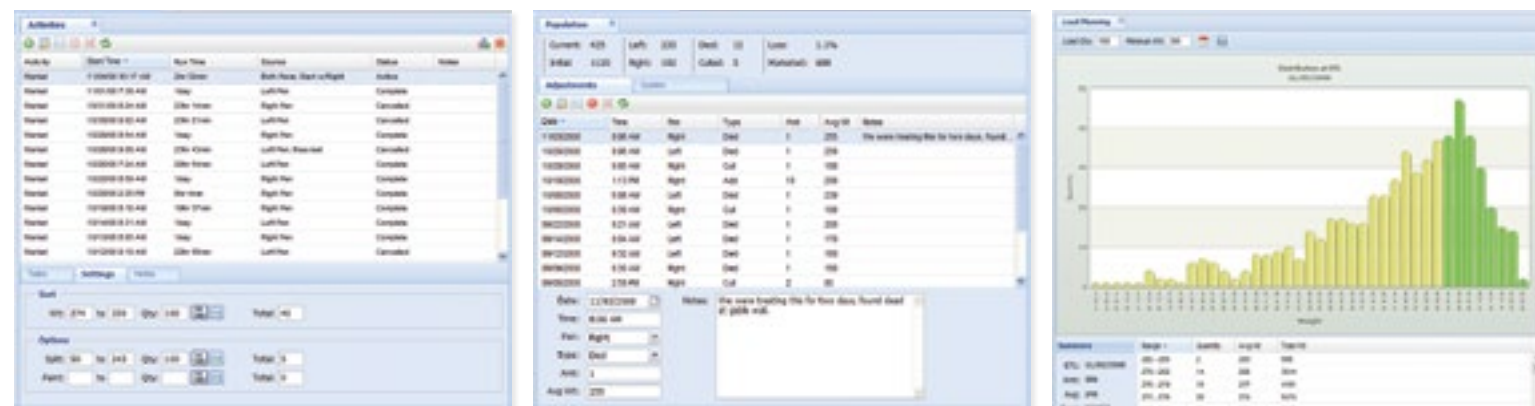
Patent #6526919, #6837189

The SortAll® Revolution 2 is a highly automated hog sorting system designed to encourage consistent growth, provide growers and integrators with highly organized data, and promote informed business decision-making. Constructed entirely out of stainless steel, each scale is equipped with a browser-based software interface, giving growers access to both granular and big-picture information on the health and progress of two pens' worth of pigs. When properly managed, SortAll finishers significantly outperform conventional finishers in sort loss, loading time and mortality.

## REPORTS



## TASKS



### Weight Distribution

- ▶ Shows estimated number of animals at various weights
- ▶ Provides total head, total weight and average weight
- ▶ Used in conjunction with ADG to make market projections

### Average Daily Gain

- ▶ Average daily gain plotted weekly
- ▶ Reports available for left, right or both pens

### Temperature

- ▶ High, low, average
- ▶ Optimal temperature range displayed for average weight

### Activities

- Main (default)**
  - ▶ Allows maximum access to food while encouraging animals to keep using the scale
- Train**
  - ▶ Used when population enters into building to familiarize them with the scale
  - ▶ Stops automatically, based on transition point specified by user (weight or time)

- Cross Sorting**
  - ▶ Sort between pens from left to right, right to left or both directions at the same time

- Market / Sort Out**
  - ▶ Sorts to the holding pen—left, right, or both pens at the same time

- Paint**
  - ▶ Paints any weight range at any time

### Population

- Summary**
  - ▶ Tracks current population totals – initial, died, culled, percentage lost and marketed
- Adjustments**
  - ▶ As the population changes, adjustments are created so that accurate reports can be generated

### Load Planning

- Projection**
  - ▶ Scale projects ship date based on user's desired minimum weight and hog quantity per market load

Learn what SortAll® Revolution 2 can do for you.

▶ [www.SortAll.com](http://www.SortAll.com)  
610-638-9645 | 800-527-7675

